



NEW & USED EQUIPMENT

IN STOCK NOW

EQUIPMENT

50 YEARS

WORLD INC.

Great Value, Great Service.

1973 - 2023

GEAR UP FOR SUCCESS

ALL PRICES LISTED ARE SUBJECT TO TAX AND FREIGHT CHARGES MAY APPLY

1-800-465-6955

info@equipworld.com



1-800-465-6955

info@equipworld.com



Thunder Bay (Head Office)

988 Alloy Drive,
Thunder Bay, ON P7B 6A5
Phone: 807.623.9561
Fax: 807.623.2943
Toll Free: 1.800.465.6955

Sault Ste. Marie

235 Drive-In Road,
Sault Ste. Marie, ON P6B 5X5
Phone: 705.949.7379
Fax: 705.949.7396
Toll Free: 1.855.949.7379

Sudbury

1130 Lorne Street,
Sudbury, ON P3C 4S9
Phone: 705.669.1234
Fax: 705.669.1250
Toll Free: 1.877.233.3335

Timmins

Via Mobile
Account Manager
Phone: 705.365.0025
Fax: 705.669.1250
Toll Free: 1.877.233.3335



Service and Maintenance Support

Whether you require a major overhaul or minor tune-up, Equipment World Inc. is pleased to provide top quality mechanical repairs and service with both in-shop and mobile service capabilities throughout Northern Ontario. Regular Maintenance Programs are also available.

Parts Department

Consisting of friendly and knowledgeable staff who are committed to assisting you in finding the best parts and accessories for your material handling needs. With our extensive inventory of parts, wide supplier network, and rapid response times, we're your reliable partner in reducing downtime.

Financing Options

With Toyota Industries Commercial Finance Canada, Inc. we offer manageable purchase and financing options to suit your business needs.

Warranty Information

Our 30-day all-inclusive warranty accompanied with a fresh annual inspection, provides comprehensive coverage for both new and used machines. Additionally, this complements any existing factory warranties to ensure maximum protection for your equipment investment.

At Equipment World, we're your one-stop shop for all your equipment needs in Northern and Northwestern Ontario. With locations in Thunder Bay, Sault Ste. Marie, and Sudbury, we've got the whole northern region covered, from Gravenhurst to Kenora and beyond.

We've got it all – forklifts, excavators, telehandlers, aerial lifts, skid steers/loaders, and even nifty smaller gear like light towers, compressors, pumps, heaters, and battery chargers. With our dedicated account managers and equipment sales gurus, we're here to help you find the perfect equipment for your needs and budget.

Our three strategic branches mean we've got gear galore, so you get the top-notch service you deserve.

Looking for new or used equipment? No worries! We've got the expertise and the right connections to meet all your equipment needs, thanks to our fantastic partnerships with top equipment brands.

FORKLIFTS

USED



8040

2007 TOYOTA 7FGCU60 I.C. Forklift (Cushion)

- 121 V Mast
- 42" forks with new tires front and rear
- **13,300lbs Capacity**

\$19,995 5347 Hours

USED



8240

2008 HYSTER H110FT I.C. Forklift (Pneumatic)

- Diesel
- 152" 2 Stage Mast
- **10,000lbs Capacity**

\$29,995 10743 Hours

Pricing includes new tires & new side-shifting fork positioner

USED



3334

2015 JLG 10054 SkyTrak® Telehandler

- 53ft 2in. Lift Height
- 38ft 9in. Reach
- **10,000lbs Capacity**

\$135,995 5117 Hours

USED



8038

2006 TOYOTA 7FGCU35 BCS I.C. Forklift (Cushion)

- 199" FSV Mast
- Sideshift
- **8,000lbs Capacity**

\$12,995 3697 Hours

NEW



2023 TOYOTA 8FGU32 I.C. Forklift (Pneumatic)

- 187" FSV Mast
- 42" Forks
- **6,500lbs Capacity**

\$69,900

NEW



2023 HANGCHA CPYD25 I.C. Forklift (Pneumatic)

- 189" 3-Stage Mast
- 42" Forks
- **5,000lbs Capacity**

\$32,900

FORKLIFTS

USED



2006 TOYOTA 7FGCU25 I.C. Forklift (Cushion)

- 218 FSV
- Propane Only
- 42" Forks, Automatic
- **5,000lbs Capacity**

\$12,900

6938 Hours

NEW



2023 TOYOTA 8FGU25 I.C. Forklift (Pneumatic)

- 189" FSV Mast
- 42" Forks
- **5,000lbs Capacity**

\$60,500

NEW



2023 TOYOTA 8FGU18 I.C. Forklift (Pneumatic)

- 189" FSV Mast
- 42" Forks
- **3,500lbs Capacity**

\$54,900

USED



1999 TOYOTA 5FBEC18 Electric Forklift (3-Wheel)

- Cushion Tires
- 3rd Shift, 36V
- **3,500lbs Capacity**

\$5,000

7428 Hours

CHARGER EXTRA

USED



1979 RAYMOND 20R30TF Electric Pallet Stacker

- 130" Lift
- 24 Volt
- Reverse Steering
- **3,000lbs Capacity**

\$5,000

2708 Hours

CHARGER EXTRA

USED



TOYOTA 5FBEC13 Electric Forklift (3-Wheel)

- 118" FSV Mast
- Cushion Tires
- **2,500lbs Capacity**

\$8,000

53175 Hours

CHARGER EXTRA

LOADERS

NEW



**2023 GEHL RT165
Compact Track Loader**

- Cab With Heat & AC
- Joystick Controls
- **1,650lbs Capacity**

\$86,500

USED



**2017 T450T4 BOBCAT
Compact Track Loader**

- 61 Horsepower
- Diesel Engine
- **1,400lbs Capacity**

\$42,995 1690 Hours

NEW

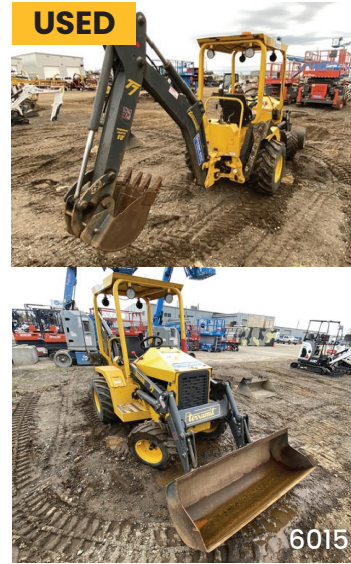


**2023 BOBCAT S70
Compact Skid Steer**

- Heated Cab
- Diesel Engine
- 23.5 Horsepower
- **760lbs Capacity**

\$40,950

USED



**2017 TERRAMITE T7D2
Mini Backhoe Loader**

- 24.8 Horsepower
- Kubota Diesel Engine
- 8' 8" Dig Depth
- 1/3 cu. yd. Loader Bucket
- 360° Seat Rotation

\$22,995 788 Hours

BOOM LIFTS

USED



**2015 SKYJACK SJ46AJ
Articulating Boom Lift**

- 46' Height Platform
- 4 Wheel Drive
- Rough-Terrain

\$69,995 1824 Hours

USED



**2015 SKYJACK SJ46AJ
Articulating Boom Lift**

- 41' - 46' Height Platform
- 4 Wheel Drive
- Rough-Terrain

\$69,995 1623 Hours

SCISSOR LIFTS

NEW



**2023 AICHI SV2032E
E-Series Scissor Lift**

- 20ft. Height
- 32" Overall Width
- 0° Turning Radius
- AC Motor Drive

\$31,250

NEW



**2023 AICHI SV2632E
E-Series Scissor Lift**

- 26ft. Height
- 32" Overall Width
- 0° Turning Radius
- AC Motor Drive

\$35,500

NEW



**2023 AICHI SV2646E
E-Series Scissor Lift**

- 26ft. Height
- 46" Overall Width
- 0° Turning Radius
- AC Motor Drive

\$36,500

NEW



**2023 AICHI SV3246E
E-Series Scissor Lift**

- 32ft. Height
- 46" Overall Width
- 0° Turning Radius
- AC Motor Drive

\$44,900

USED



**2020 ALMAC BIBI 1090 - BL BIENERGY
Rough-Terrain Scissor Lift**

- 32'8" Max Height
- 4'8 Min Width
- Diesel & Electric Engine w/
Lithium Ion Battery
- 660lbs Platform Capacity

\$110,000

49 Hours

INNOVATIVE SOLUTIONS SINCE 1973

CELEBRATING 50 YEARS

1-800-465-6955

info@equipworld.com

1-800-465-6955

info@equipworld.com

MISCELLANEOUS

NEW



2017 ECHO BCDL8 Tailgate Debris Loader

- 8" Hose Size
- 404cc
- Towable
- New/Never Used

\$6,200

USED



2011 WACKER NEUSON G150 Generator On Trailer

- 121 kW
- John Deere Diesel Engine
- Tandem Axle

\$32,995

2527 Hours

USED



TORO MB TX 2500S Mud Buggy with Swivel Bucket

- 180° Swivel
- Engine 25hp*
- 16 cu. ft. Capacity

\$22,500

345.8 Hours

NEW



ATLAS COPCO HILIGHT V4W Towable Light Tower

- Extended Fuel Tank
- Low Consumption
- Hardhat Canopy
- 8kW Engine

\$19,500

Thunder Bay (Head Office)

988 Alloy Drive,
Thunder Bay, ON P7B 6A5
Phone: 807.623.9561
Fax: 807.623.2943
Toll Free: 1.800.465.6955

Sudbury

1130 Lorne Street,
Sudbury, ON P3C 4S9
Phone: 705.669.1234
Fax: 705.669.1250
Toll Free: 1.877.233.3335

Sault Ste. Marie

235 Drive-In Road,
Sault Ste. Marie, ON P6B 5X5
Phone: 705.949.7379
Fax: 705.949.7396
Toll Free: 1.855.949.7379

Timmins

Via Mobile
Account Manager
Phone: 705.365.0025
Fax: 705.669.1250
Toll Free: 1.877.233.3335

Contact Equipment World today to discover how we can meet your equipment needs and exceed your expectations.

1-800-465-6955

info@equipworld.com

1-800-465-6955

info@equipworld.com